

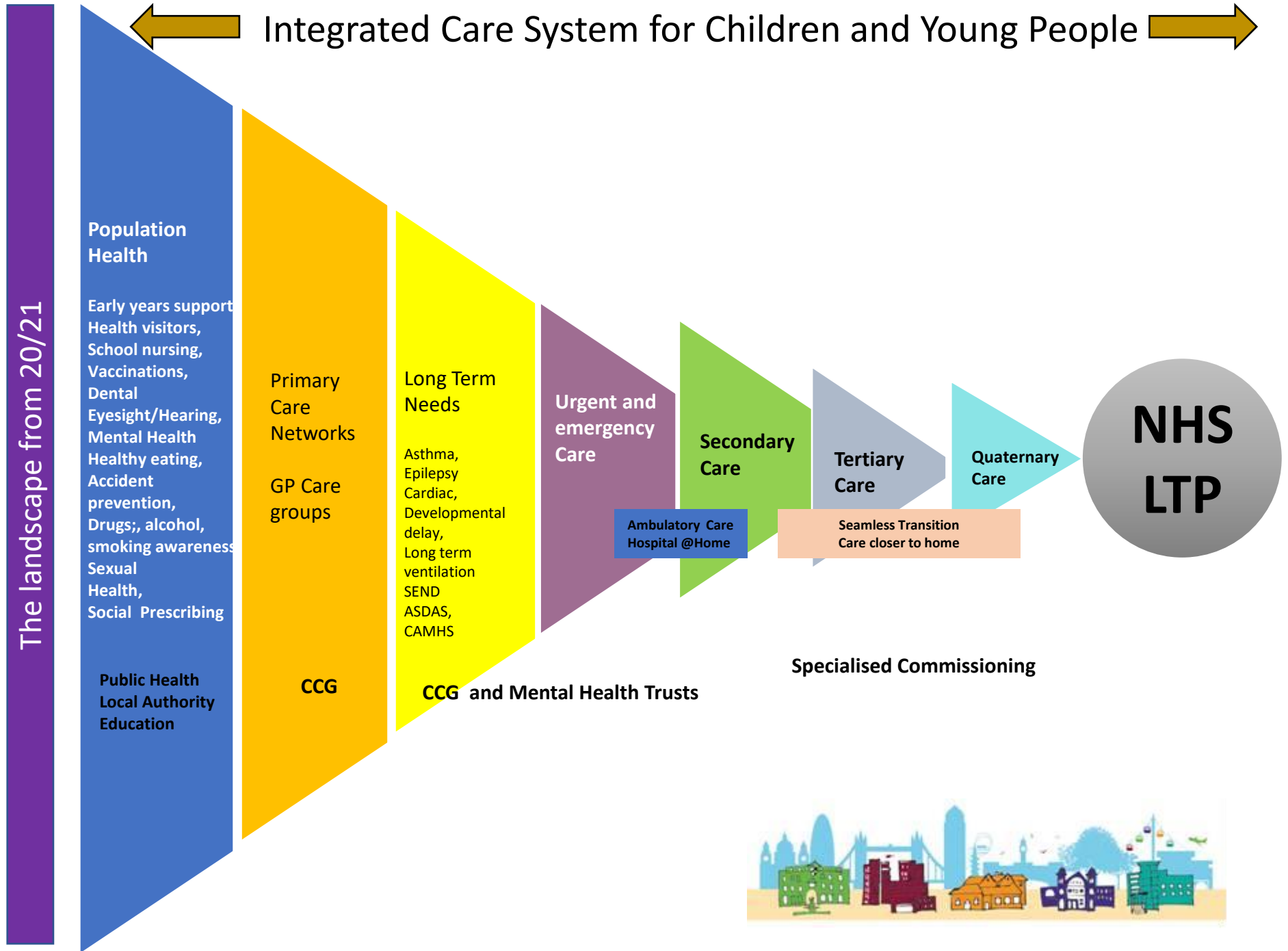


Urgent and Emergency Care

Mamta Vaidya

Barts Health NHS trust

← Integrated Care System for Children and Young People →



The landscape from 20/21

Population Health

Early years support
Health visitors,
School nursing,
Vaccinations,
Dental
Eyesight/Hearing,
Mental Health
Healthy eating,
Accident prevention,
Drugs, alcohol, smoking awareness
Sexual Health,
Social Prescribing

Public Health
Local Authority
Education

Primary Care Networks

GP Care groups

CCG

Long Term Needs

Asthma,
Epilepsy
Cardiac,
Developmental delay,
Long term ventilation
SEND
ASDAS,
CAMHS

CCG and Mental Health Trusts

Urgent and emergency Care

Secondary Care

Ambulatory Care
Hospital @Home

Tertiary Care

Seamless Transition
Care closer to home

Quaternary Care

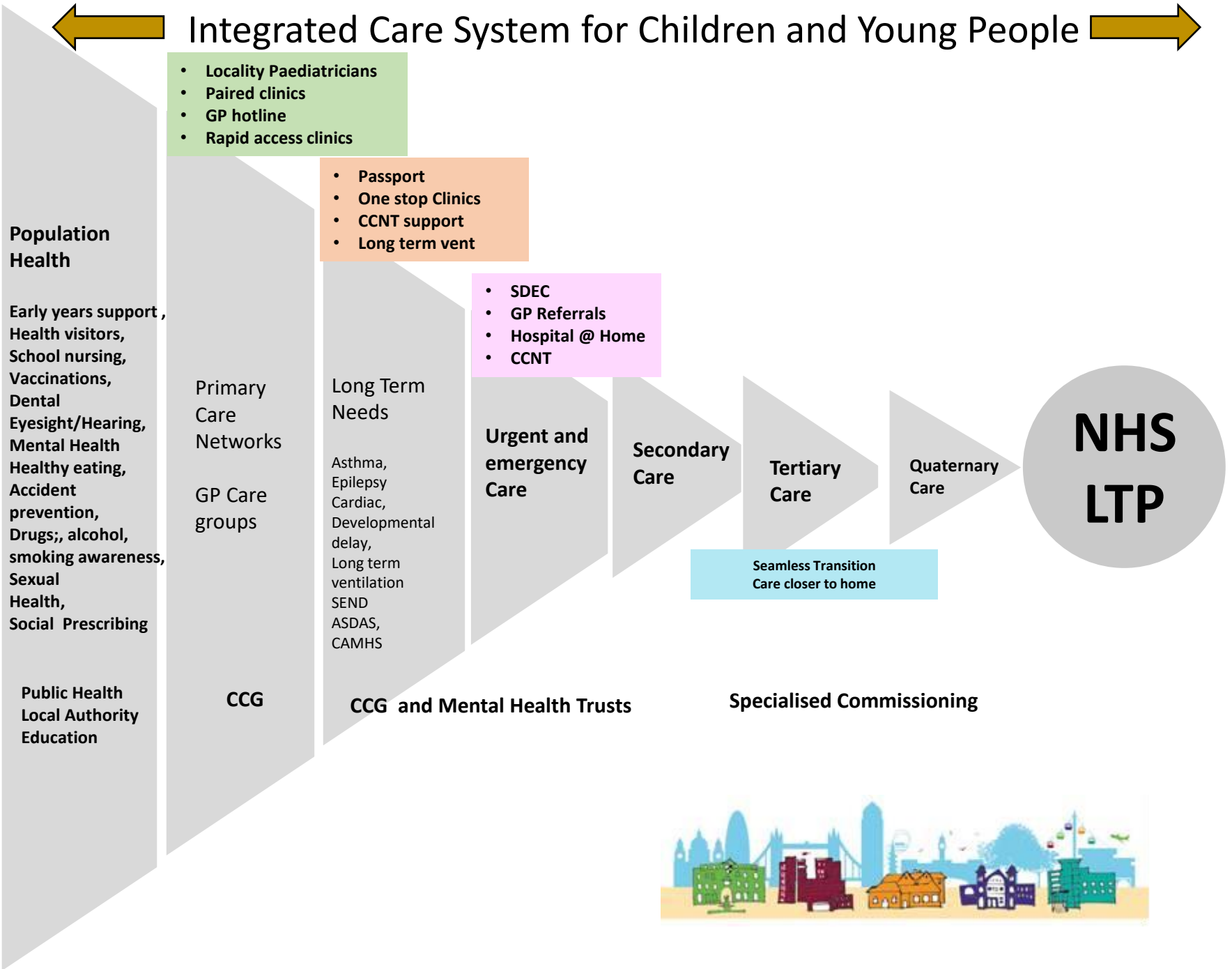


Specialised Commissioning



Integrated Care System for Children and Young People

The landscape from 20/21



The Elements of activity that we need to review to consider the options available are:

GP Practice	Outpatient care	UTC	A&E presentation	Ambulatory Care	Elective Short stay	Inpatient Stay
<ul style="list-style-type: none"> • Locality Paediatrican • Primary Care Paeds nurses • GP hotline • Rapid access Clinics • Paired Learning • RAS 	<ul style="list-style-type: none"> • General Paediatrics • Rapid access clinics • Shared care clinics • Allergy • Links with Primary care 	<ul style="list-style-type: none"> • Access to care • 111 service and response • GP trained in Paeds • ? Support needed from hospital 	<ul style="list-style-type: none"> • Type 1(can be diverted) • Number of Type 3 (resus, cats retrievals) • Conversion rate of attendances to admissions • Admission avoidance • Clinical decision Unit 	<ul style="list-style-type: none"> • Current provision • LOS<24 hours • CCNT provision & out of hours for region • Hospital@ home • Staff: ANP and rota • Responsive hours • New models for care 	<ul style="list-style-type: none"> • Day care surgery • Transfusion • Chemotherapy • Allergy • Endoscopies • Immunotherapy 	<ul style="list-style-type: none"> • Current bed availability • Cubicles • Occupancy modelled winter /Summer • LOS <24 hours • LOS > 7days

The Options shall also consider:

- 1) The dependency from Adult sites to use Paediatric Staff or space in the second surge
- 2) The current staffing challenges and contribution from community registrars
- 3) The hospitals that can meet the expansion that needs to happen to maintain the bed numbers in the short term without huge investement.
- 4) The sub specialist interests on sites and its interdependencies need to be considered. Maternity and neonatal services need careful thought.



Services Provided across NEL sector:

HOSPITAL	OPD	A&E	Ambula	Daycare	H@H	CCNT	Inpatient	Special	Neonate
RLH	✓	✓	X	✓	✓	✓	✓	✓	Level 3
WX	✓	✓	X	✓	X	NELFT	✓		Level 1
NUH	✓	✓	?	✓	X	ELFT	✓		Level 2
Homerton	✓	✓	✓	✓	X	?	✓		Level 3
BHURT	✓	✓	?	✓	?	?	✓		Level 2

